

Hood Breeze inox

Hoods

Code: 2537 001



DETAILS

Material	Stainless steel
Texture	Brushed in line
Energy class	A+
Ceiling – false ceiling distance	min 200 mm - max 280 mm
Full description	Breeze Inox - ceiling suction hood
Grease filters	3 grease filters
Operation	Suction hood (filtering modality not available)
Cut out	473x970 mm
Air exhaust hole	230x80 mm

Lighting	Illuminazione 2 LED strip (2.700/4.000/5.500 kelvin)
Motors	360° rotatable
Air flow rate	930mc/h
Motor power	85W
Motors type	Silence Plus
Hood type	Ceiling suction hood
Type of commands	Remote control
Suction speed	4 operating speeds
Notes:	Fume exhaust ducts must have an internal diameter not lower than 120 mm

FEATURES

360° swiveling motor	Swiveling motors are flexible systems that allow an easy installation, in any situation.
Auto delayed shutdown	All the models with electronic interface can be programmed to turn off the suction at a postponed moment, so as to prolong the aeration of the room even after the cooking has been completed.
Four-position swiveling motor	Four-exit motors are flexible systems that allow an easy installation, in any situation
Led colour temperature selector	The color temperature of the Breeze hood can be changed according to the environment in which it is inserted, so you can choose among a warm, natural or cold light.

Minimum overall

Foster ceiling-mount ventilation systems require little space. The icon appears next to models that require less than 20 cm between the concrete ceiling and the countertop.

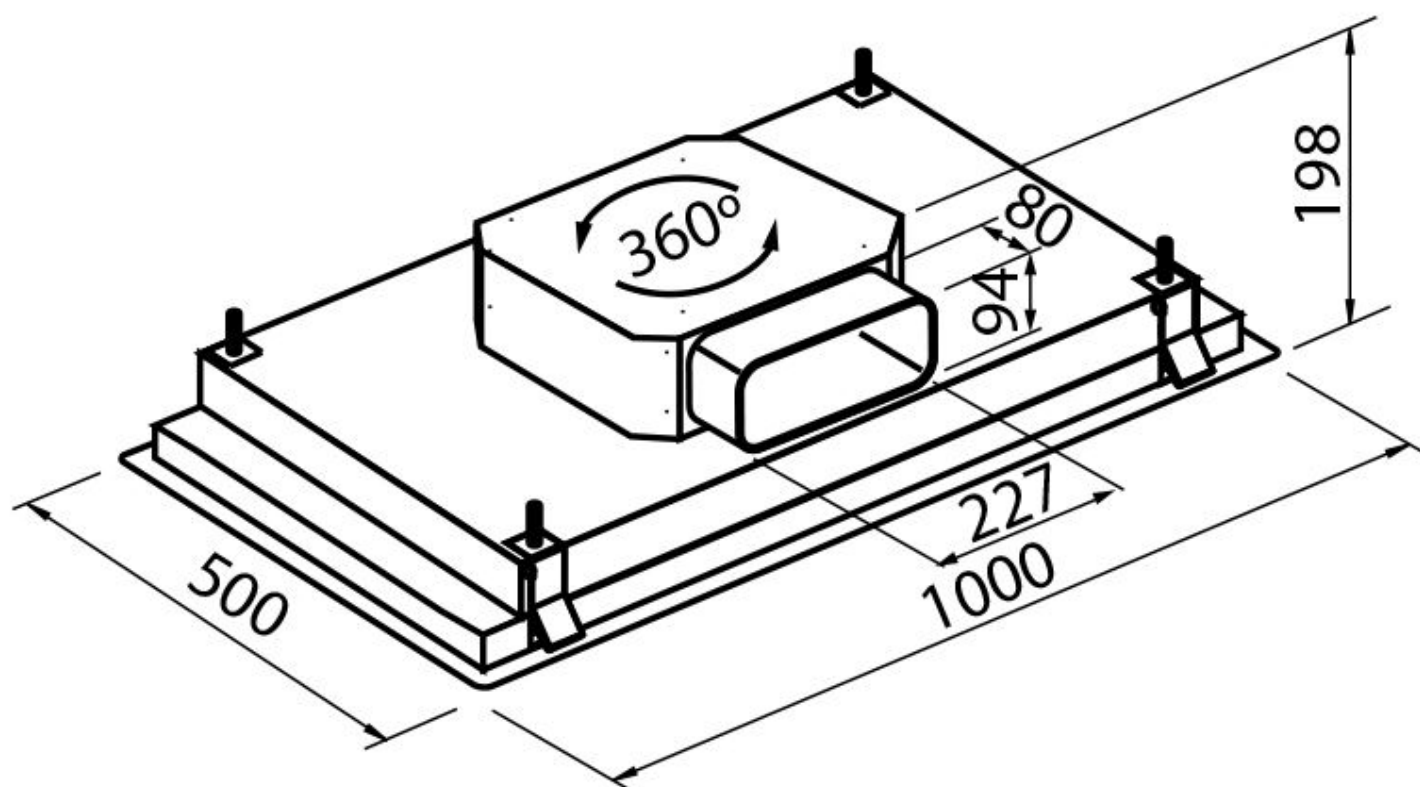
Perimetric aspiration

The perimeter suction is a feature common to many Foster hoods. The filters are hidden by steel- or crystal plates and the suction occurs along their perimeter. This has aesthetic advantages but also functional ones: the cleaning is easier, the suction power and noise-level are improved. The depression which occurs in the perimeter area facilitates in fact the suction of the particles composing the fumes.

Remote control

The ceiling suction systems and the Maya hoods are equipped with a remote control to easily activate all their functions from any position.

TECHNICAL DATA



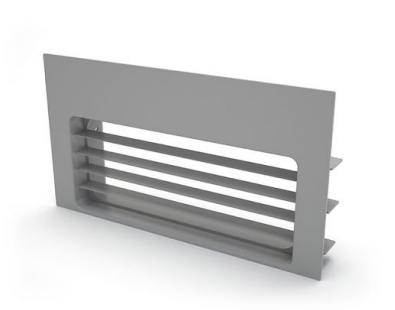
GALLERY



OPTIONAL ACCESSORIES



Active charcoal refill for Long Life filter



Grid for plinth gray color



Horizontal 15° Corner connector - rectangular section



No-return valve



Professional Long Life charcoal filter



Rectangular/round adapter



White connector - rectangular section



White flexible tube with rectangular section



White Horizontal 90° Corner connector - rectangular section



White tube - rectangular section



White Vertical 90° Corner connector - rectangular section